

Sensory Friendly Map

SEA LIFE Melbourne Aquarium

SEA LIFE Melbourne Aquarium can be an exciting yet overwhelming day out for any child. Use these maps to assist with planning your day, with key facilities and simple directions in how to move around the building.

There will be varying levels of lighting and music throughout the attraction to enhance the visit, however these may be overstimulating for our sensitive visitors. You are welcome to bring noise cancelling head phones or leave the aquarium for a break, and re-enter later.

Please note, as exhibitions change, parts of this map may not always be up to date.

Refer to the FAQ on the website for additional information.



Accessible
toilets



Toilets



Escalator



Lift



Cafe



Low
light



Tunnels/Bubbles



Exhibits



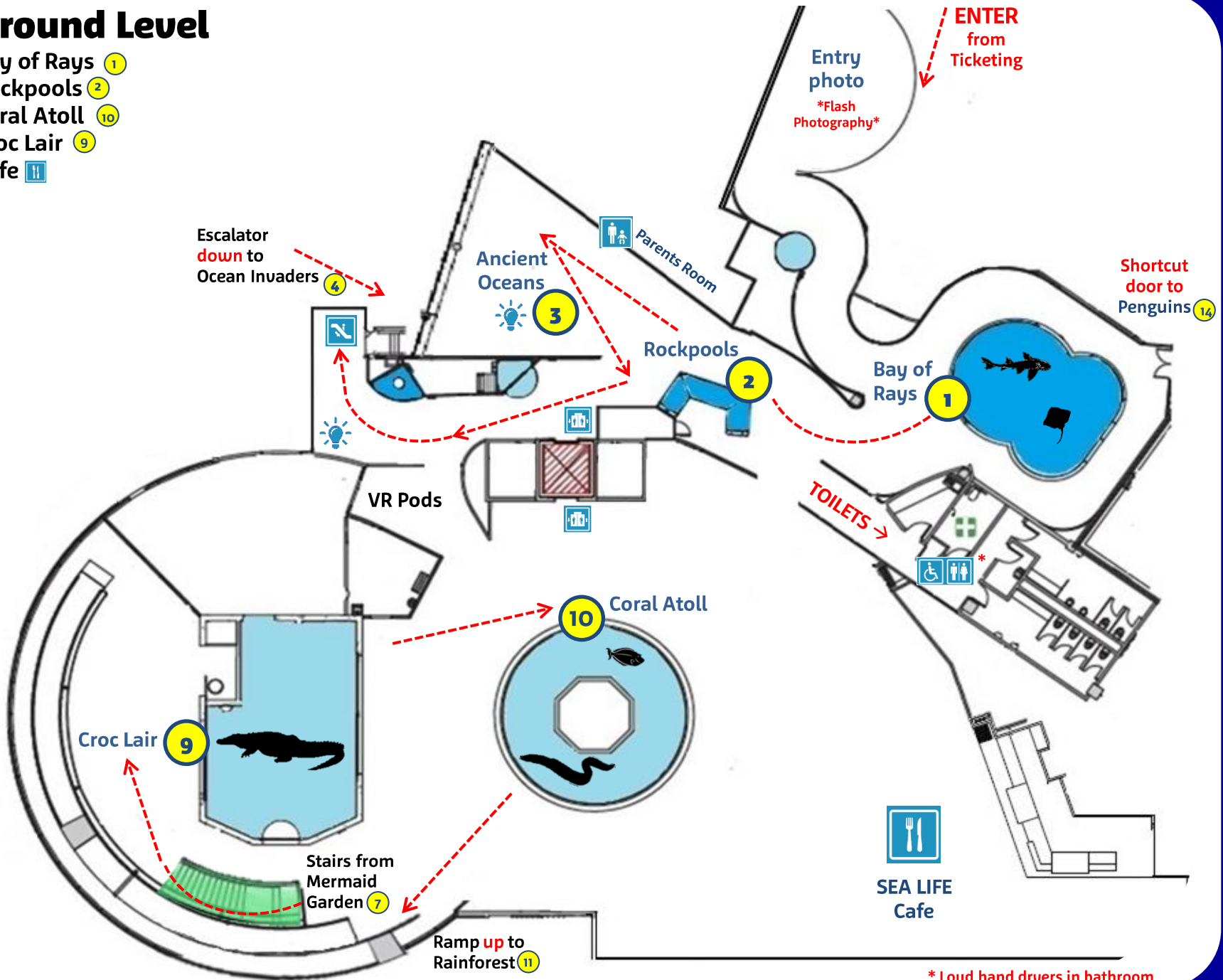
Wet/Open
water



Stairs

Ground Level

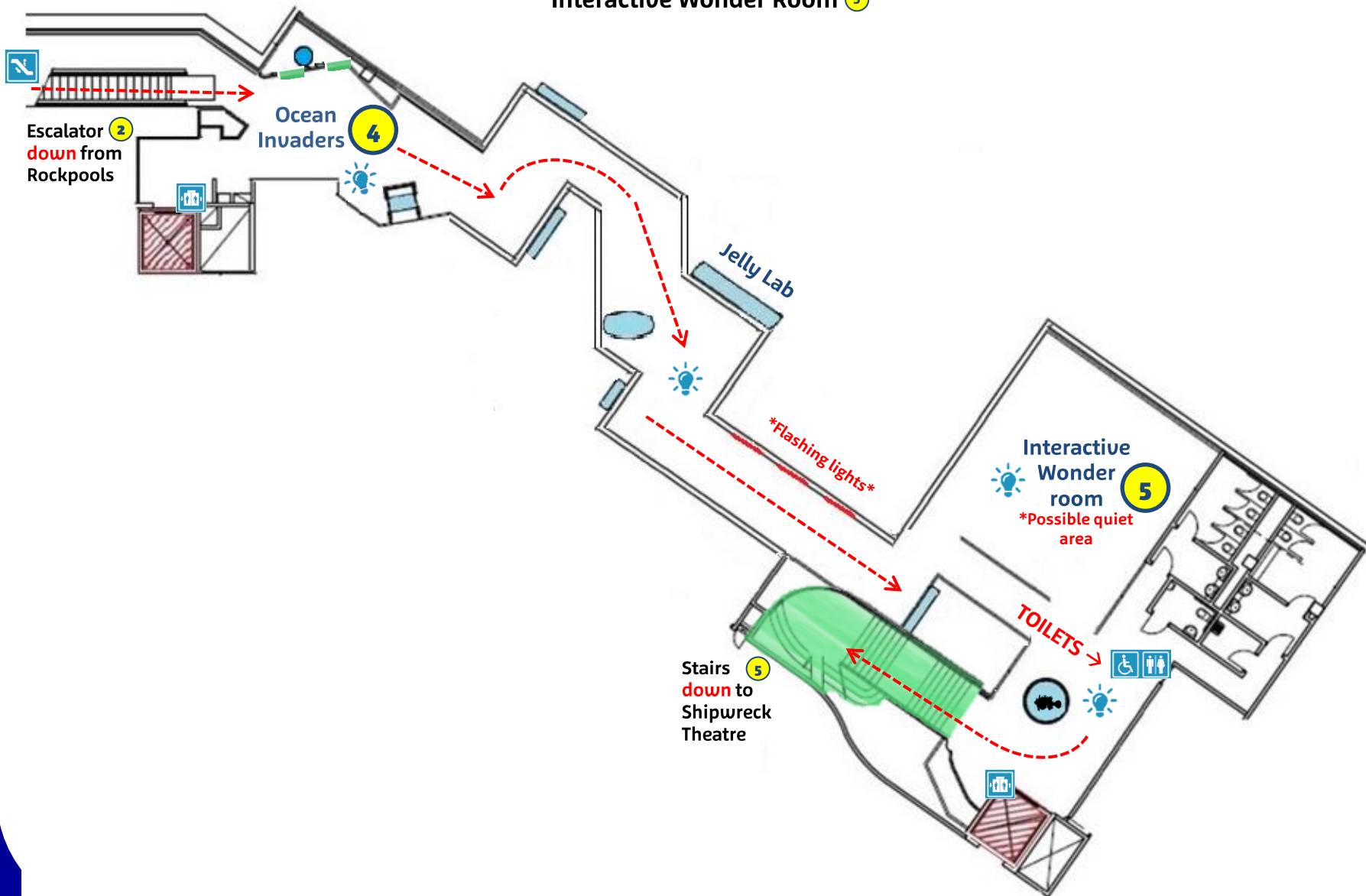
- Bay of Rays ①
- Rockpools ②
- Coral Atoll ⑩
- Croc Lair ⑨
- Cafe ⑪



* Loud hand dryers in bathroom

B1 Level

Ocean Invaders ④
Interactive Wonder Room ⑤

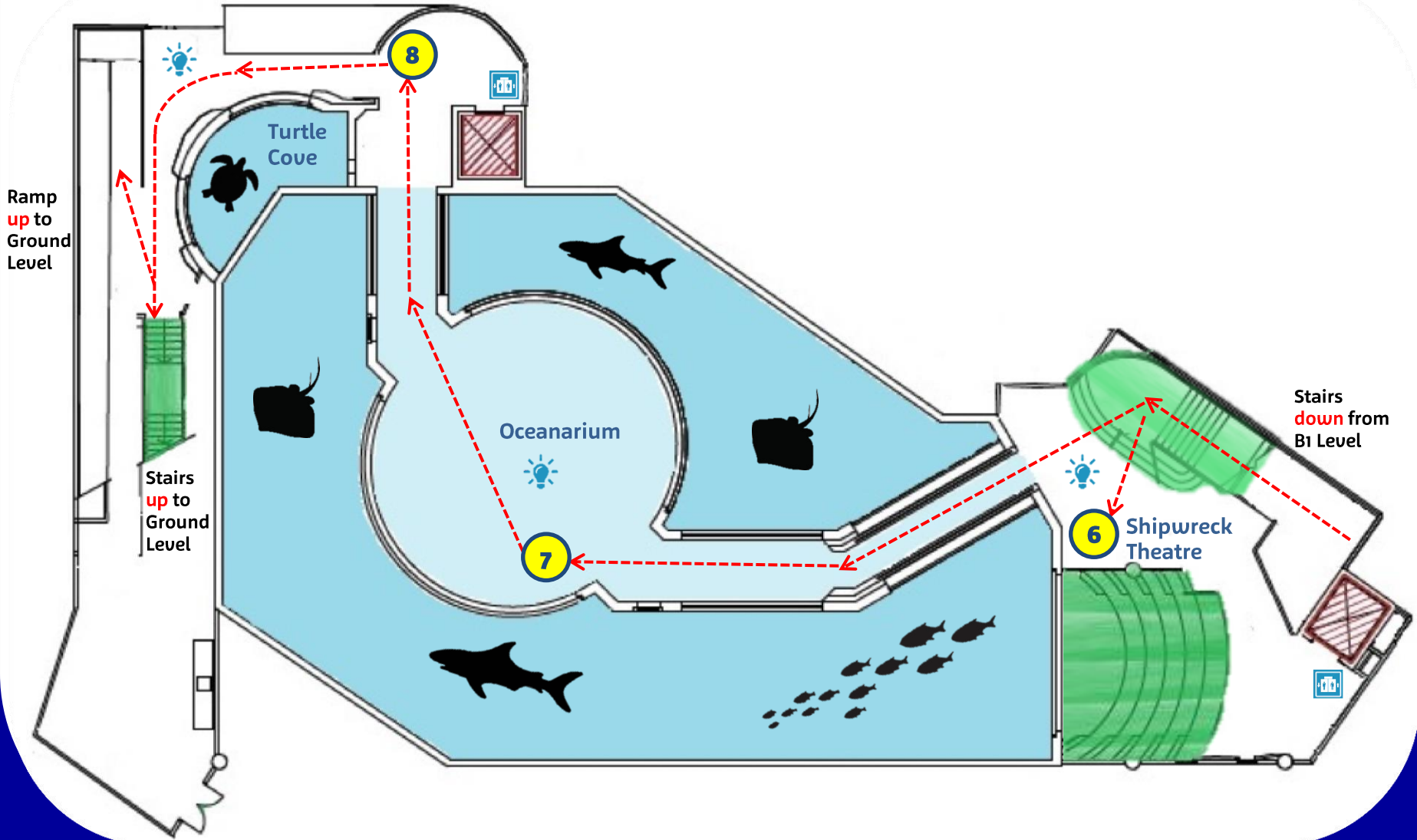


B2 Level

Shipwreck Theatre 6

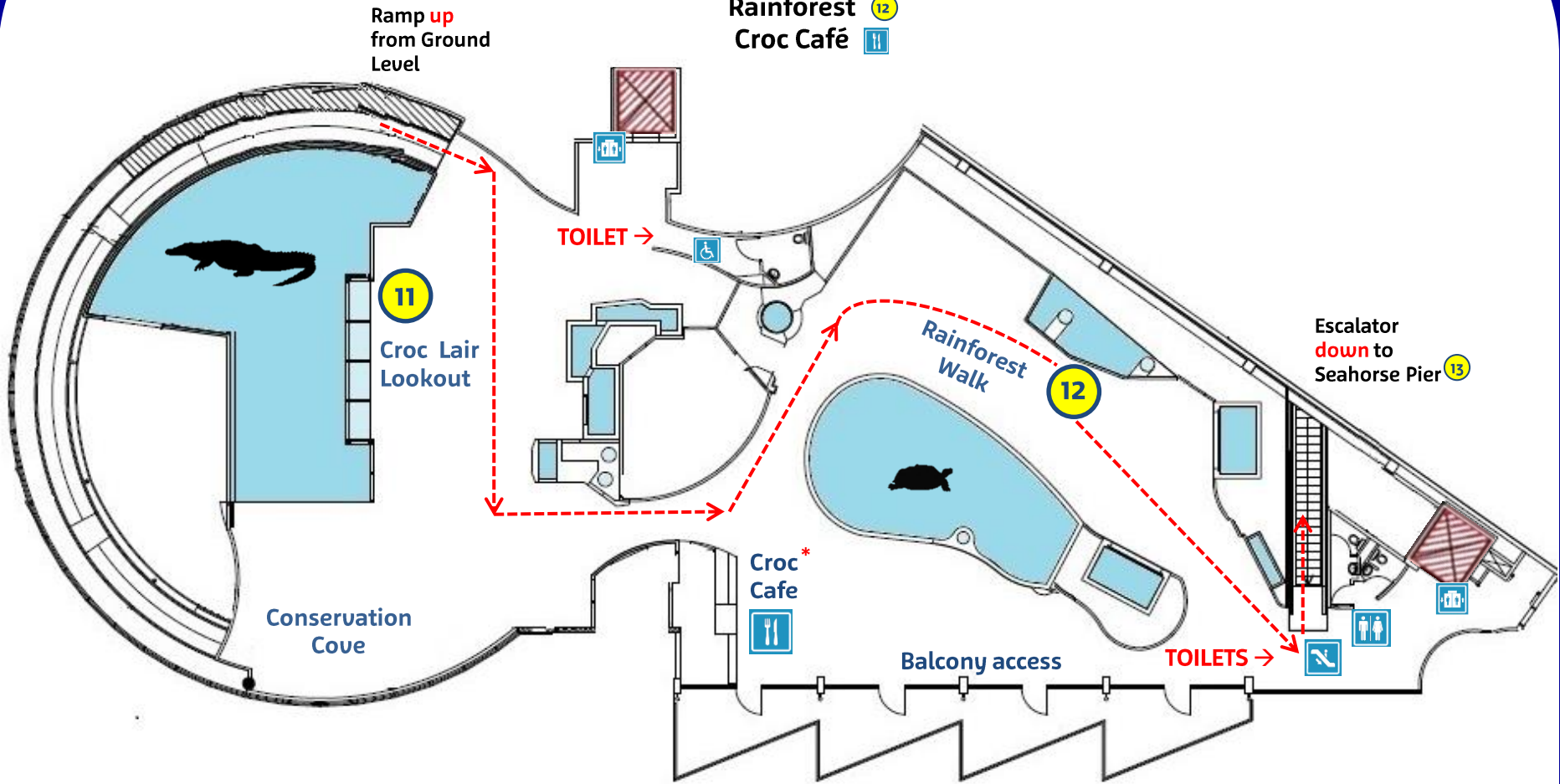
Oceanarium 7

Turtle Cove 8



Level 1

- Croc Lair Lookout 11
- Rainforest 12
- Croc Café 11



* Operates during School Holidays

Ground Level *cont.

Penguin Playground 14

Seahorse Pier 13

Gift shop/Exit

