



## Educational Visit Guide & Worksheets

# Habitat Explorers

Teacher Visit Guide: Grades 6<sup>th</sup> – 8<sup>th</sup>

### About the Lesson

Become Habitat Explorers! Jump into a world of amazing discovery to learn about the different zones of the ocean and the creatures that live there. Thinking about habitats and adaptation, students will consider the challenges of life in various parts of the ocean, matching creatures and their adaptations to the exhibits they discover at SEA LIFE. Students will apply their learning to an exploration of their own unique features and adaptations!

### Pre-Visit & Post-Visit Activities

Our pre-visit lesson plan for parents/teachers includes a PowerPoint presentation and student activities to get you ready for a fun-filled, educational day at SEA LIFE Aquarium. Our post-visit lesson plan encouraging critical thinking and reflection on the SEA LIFE educational experience.

### Next Generation Sunshine State Science Standards

- **SC.7.L.16.1:** Understand heredity as the passage of genetic instructions from one generation to the next.
- **SC.7.L.16.3:** Differentiate between inherited traits and those influenced by the environment.
- **SC.7.L.17.1:** Explain and illustrate the roles of and relationships among producers, consumers, and decomposers.
- **SC.7.L.17.3:** Describe and investigate limiting factors in the environment and their effect on populations.
- **SC.7.E.6.6:** Identify renewable and nonrenewable resources.
- **SC.7.E.6.7:** Recognize the consequences of the depletion of renewable and nonrenewable resources.
- **SC.8.E.5.10:** Assess how human activities can impact Earth systems on local, regional, and global scales.



## Diving In

Did you know? Stingrays often bury themselves in the sandy bottom of their shallow coastal habitat! An animal's habitat is its natural home or environment.

What is your habitat? Draw an 'x' next to your answer:

\_\_\_\_\_ a house

\_\_\_\_\_ an apartment

\_\_\_\_\_ a townhouse

\_\_\_\_\_ something else

## Gentle Jellyfish

Jellyfish aren't very strong swimmers! They often use the currents and moving water in their open ocean habitat to move along and wait for prey to come near.

Can you tell which way the current is moving in the jellyfish habitat here at SEA LIFE? What do you think would happen if that current stopped moving?

\_\_\_\_\_



## Ocean Tunnel

Wow! You are totally surrounded by this ocean habitat! Imagine you are one of the sharks swimming by. What do you observe in this exhibit that make it a good habitat for sharks like you?

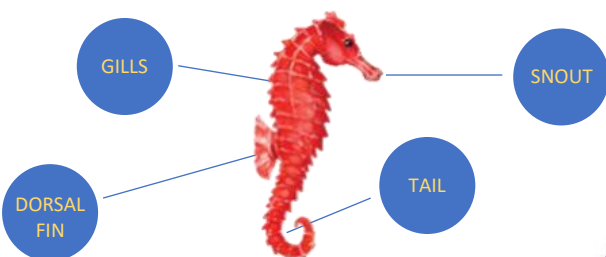
\_\_\_\_\_

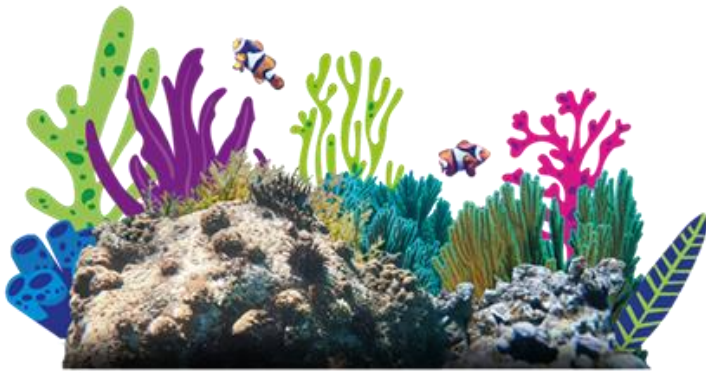
\_\_\_\_\_

## Super Seahorses

Seahorses have many unique features that help them survive in their habitat. They use their snout to slurp up food, their gills to breathe, their dorsal fin to swim (slowly!) and their tail to grip coral and other objects.

Circle the feature you think is most helpful to seahorses in their habitat!





## Coral Reef

Did you know? More wildlife lives around coral reefs than in any other habitat in the ocean! Even the reefs themselves are alive. Although they look like colorful rocks, corals are actually animals!

Coral reef habitats are home to many types of sea creatures, from clams and sea stars to eels and fish! Who do you spy living in our coral reef habitat? Look closely, many reef dwellers are masters of camouflage!

## Remarkable Rockpool

Swim over to our rockpool to meet some amazing creatures! Rockpools are made when the tide goes out, leaving some water behind in shallow pools on the shore. These are some of the most unique and diverse habitats in the world!

You can get even closer and touch the creatures living here! Which creatures did you meet in the rockpool?

---

---

---

---



## Draw Your Favorite!

You explored so many incredible habitats today! Which one was your favorite?

Draw it in the box!

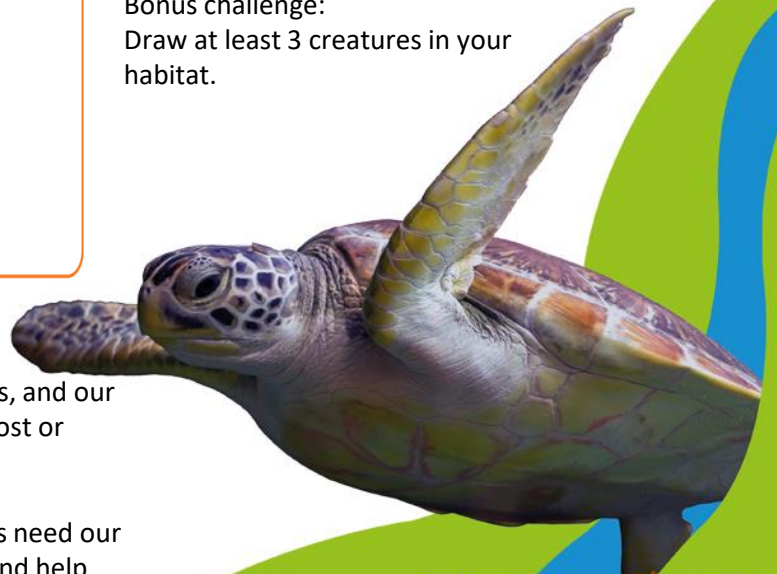
Bonus challenge:

Draw at least 3 creatures in your habitat.

## Conservation Connection

Conservation is the protection of plants, animals, and our world's resources to prevent them from being lost or wasted.

No matter their size and shape, all sea creatures need our help! Remember to choose reusable products and help keep plastic and other pollution out of wild habitats!



**SEA LIFE**  
EDUCATION