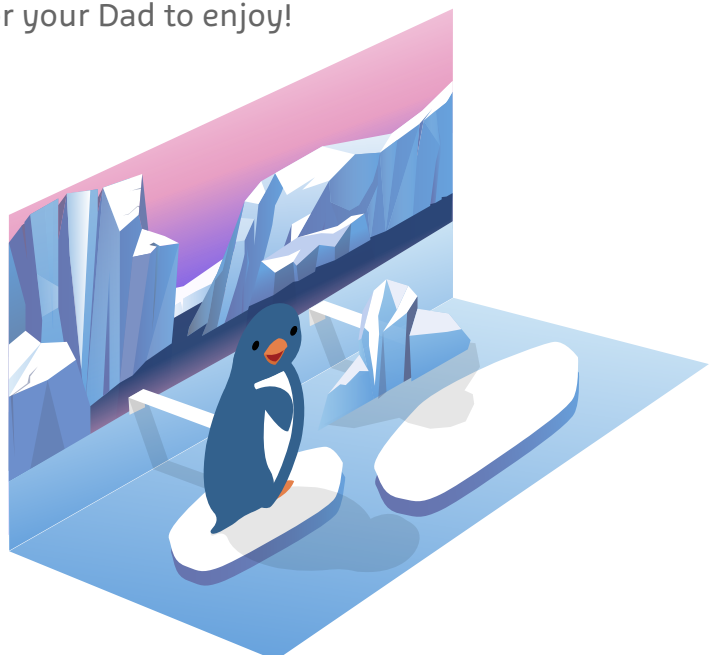
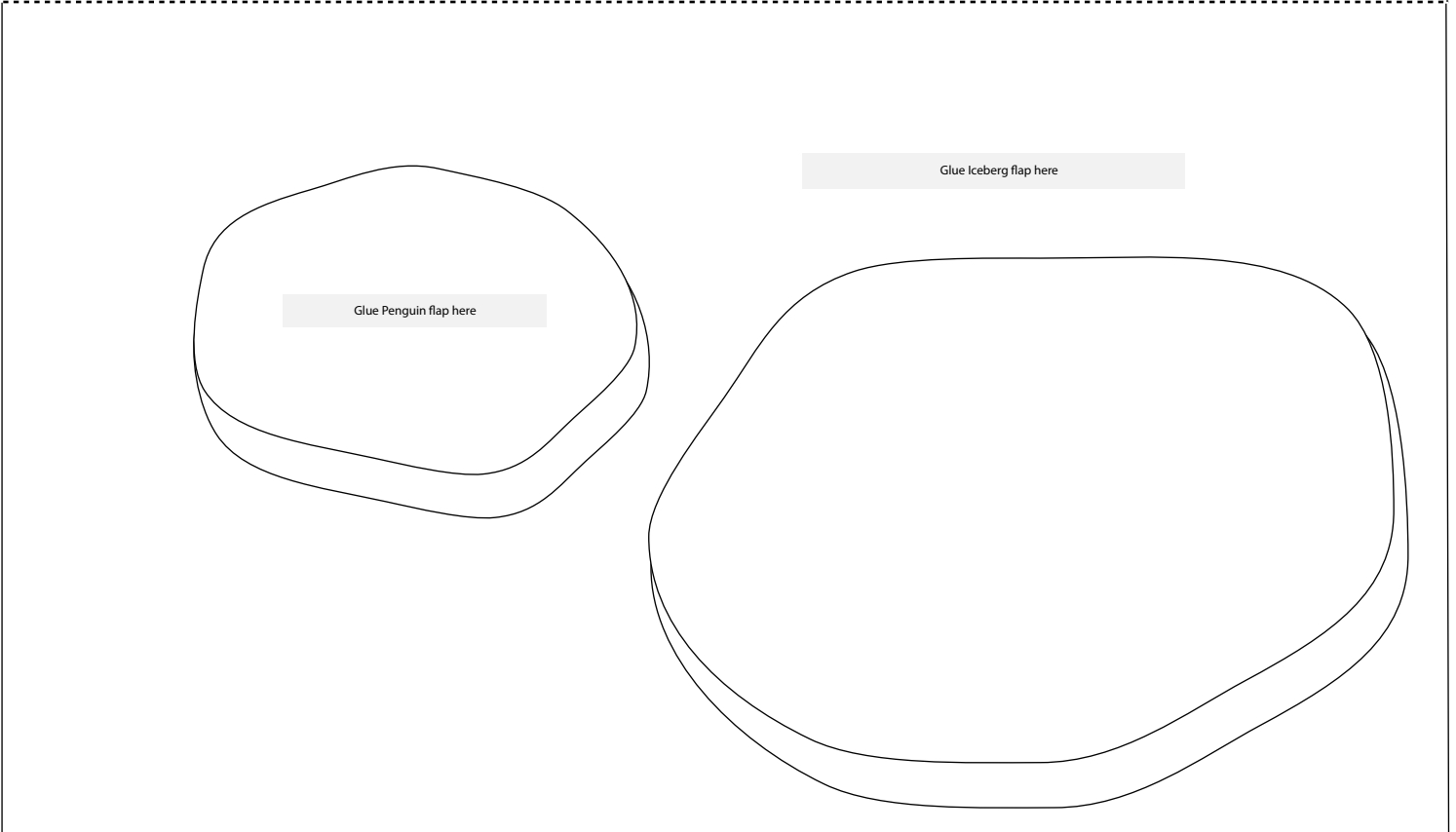
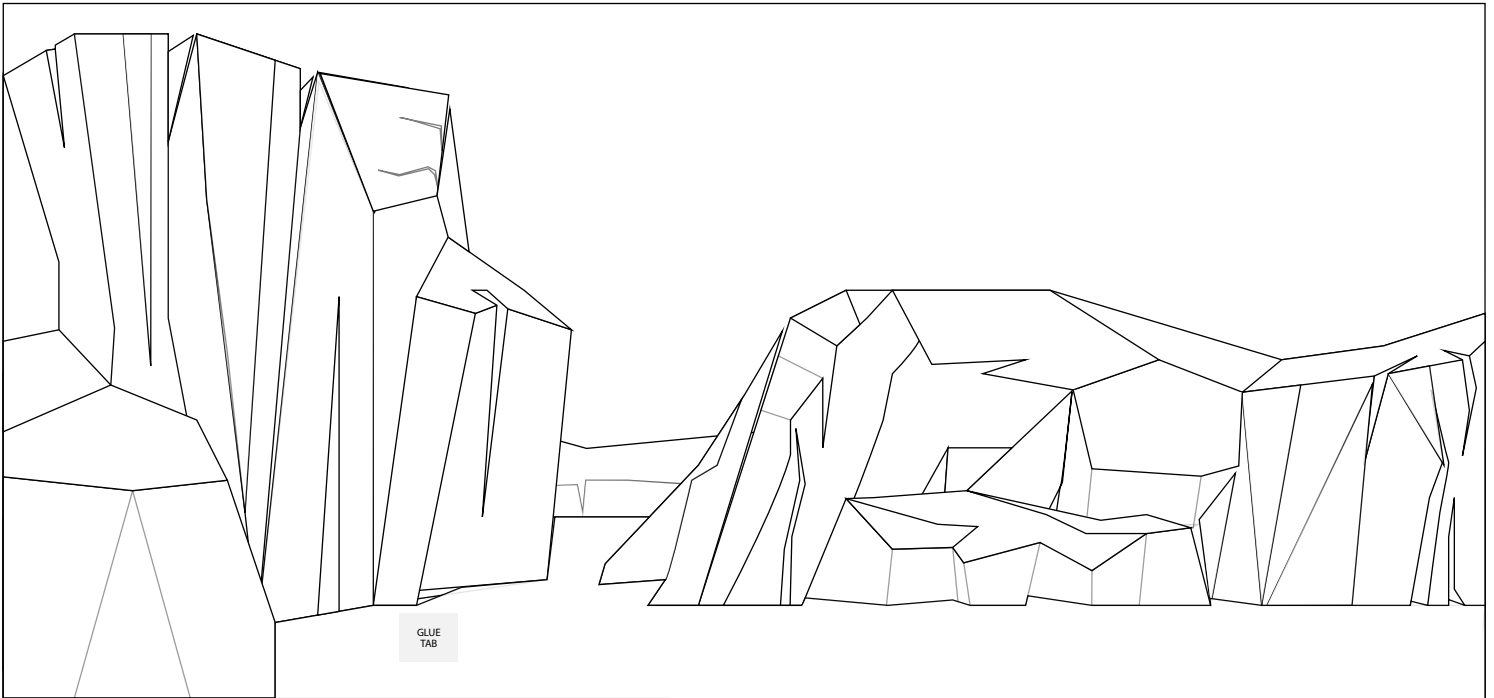




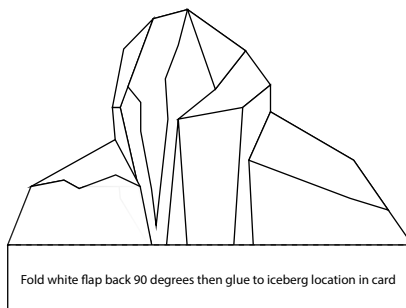
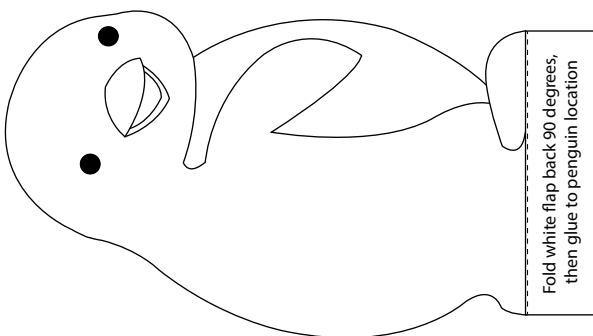
Father's Day Popup Card

1. On the following page, colour in all the elements as you wish. Use the large iceberg on the right for a message to your dad. Use the example on this page as a colour guide if you like.
2. Cut out the edges of the card, penguin, iceberg and popup extender tabs.
3. Fold the white flaps 90 degrees back on the bottom of the penguin and iceberg so the tab text is facing downwards.
4. Apply glue to the text side of the penguin and icebergs bottom tabs and glue them in the positions marked on the card.
5. Take your two popup extender tabs and fold along the dotted lines. The longer one is for the penguin and the shorter one for the iceberg.
6. Glue one end of the extender tab onto the back of the card where marked. Fold the card inwards along the dotted line, then glue the other end of the extender tabs to the back of the penguin and iceberg. This will make them pop up when you open and close the card.
7. Select your favourite message and icons to colour in and decorate with glitter. Cut this out, apply glue and stick them to the front outside of the card.
8. Your card is now complete and ready for your Dad to enjoy!



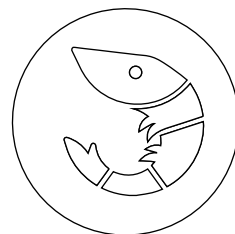
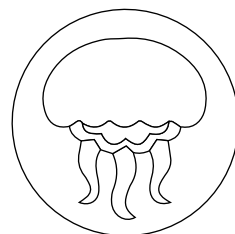
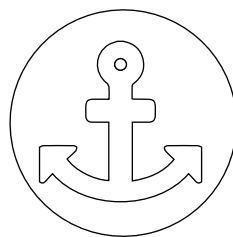


Fold the card along the dotted line

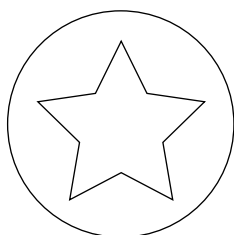
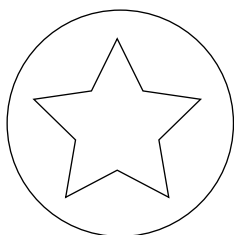


Cut out the card, penguin, iceberg and their extender tabs

Happy
Father's
Day!



World's
best
dad!



Greatest
dad ever!

